

# Cómo se vestían los romanos

## How Romans Dressed



Los ciudadanos más pobres vestían una túnica simple.  
*The poorest citizens wore a simple tunic.*



Los otros ciudadanos llevaban una toga de lana blanca sobre la túnica.  
*The other citizens wore a white woollen robe over the tunic.*



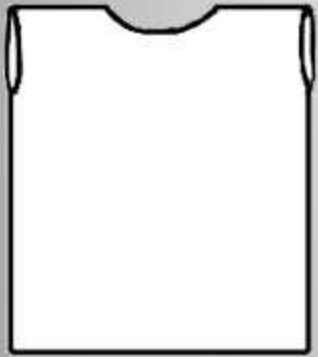
Las mujeres llevaban una estola sobre una túnica de lana fina.  
*Women wore a stole over a thin woollen tunic.*



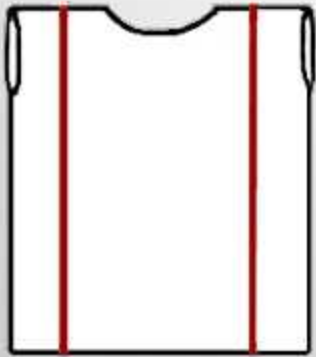
Los senadores llevaban una toga blanca con ribetes púrpuras.  
*Senators wore a white robe with purple trim.*



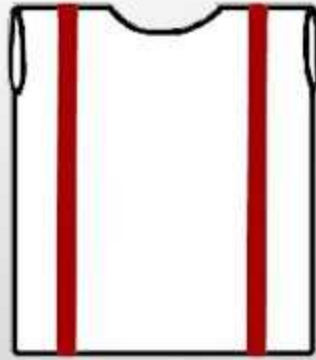
Los centuriones y oficiales del ejército llevaban una coraza (loriga) con un cinturón de tiras de cuero. También llevaban un casco con penacho (crista).  
*Centurions and other army officers wore a breastplate (loriga) with a belt made of leather strips. They also wore a helmet with a tufted crest (crista).*



Túnica básica.

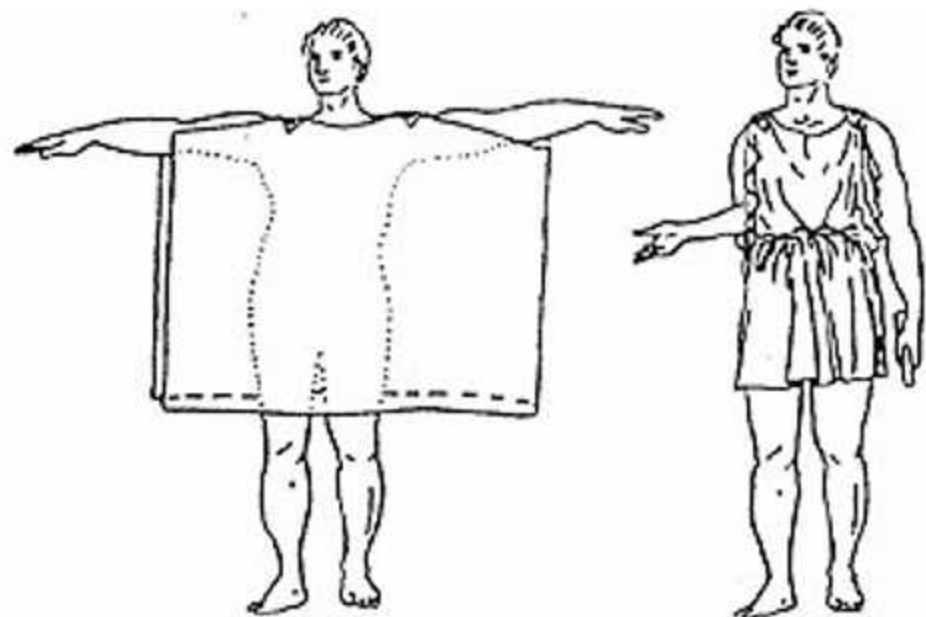
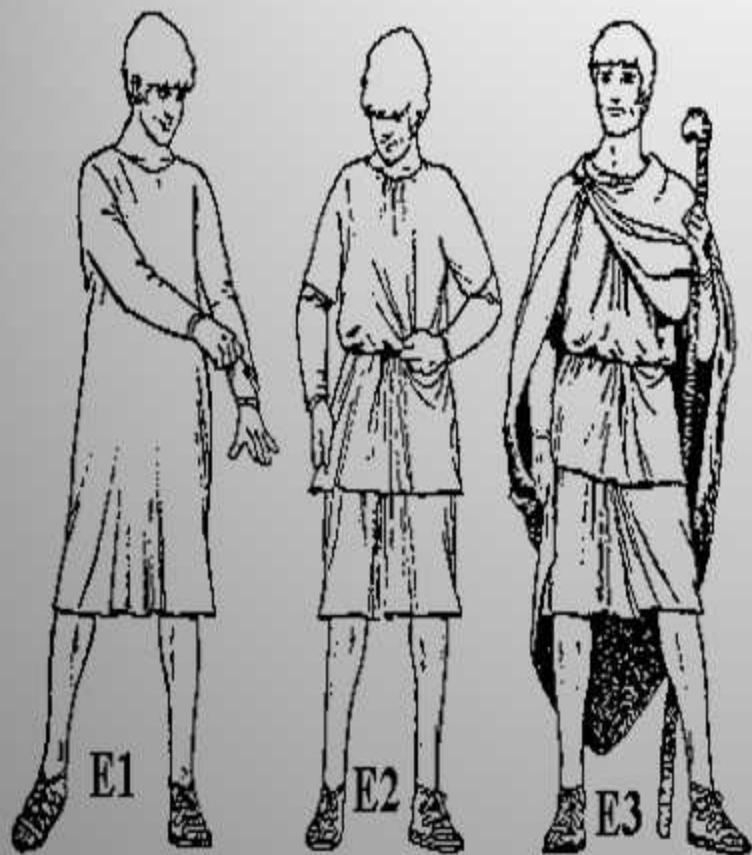


Túnica equestre  
(*tunica angusticlavia*)

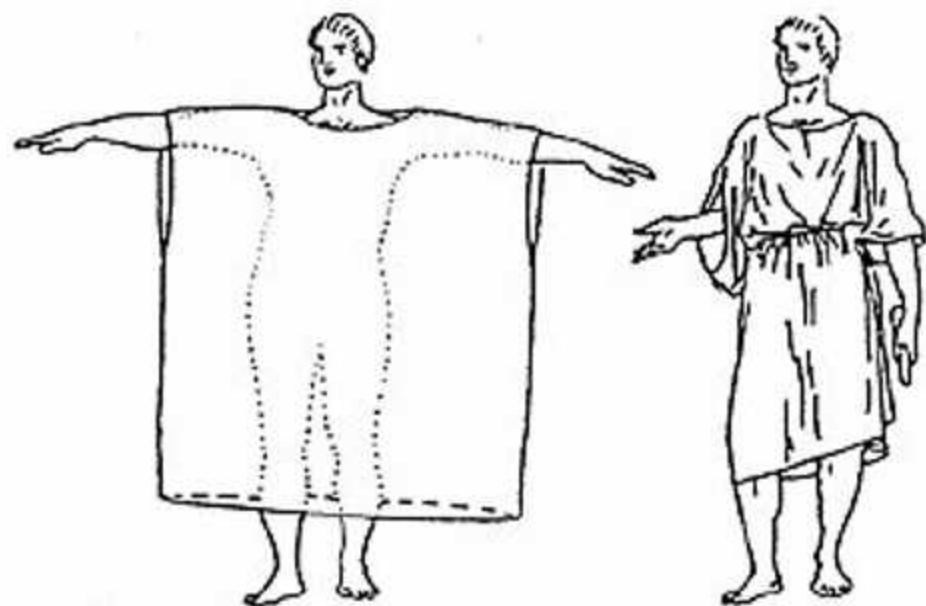


Túnica senatorial  
(*tunica laticlavia*)



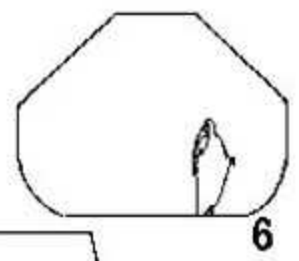
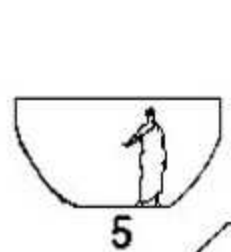
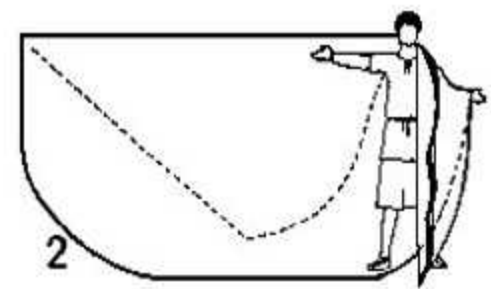
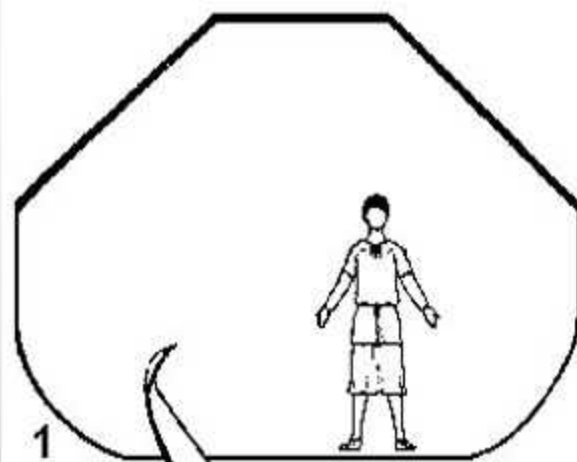


Quitón sujetado con fibulas



Quitón cosido









El peplo

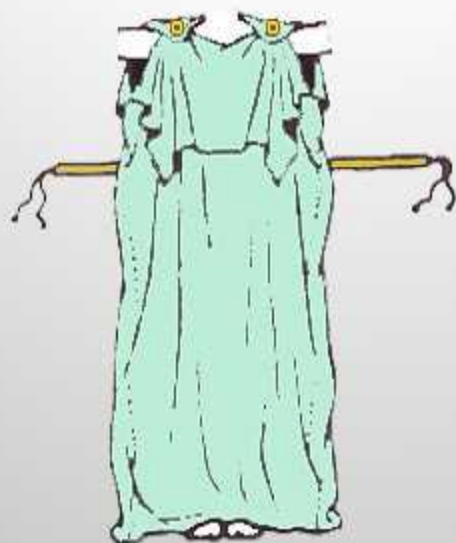
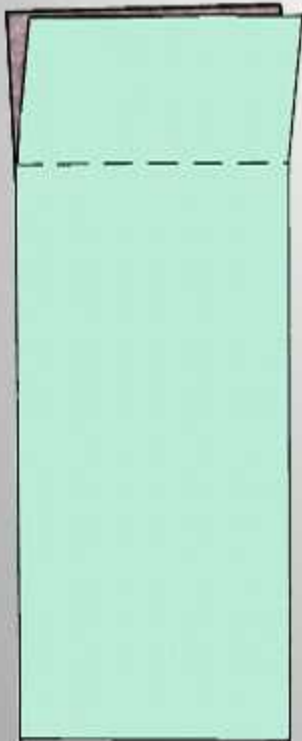
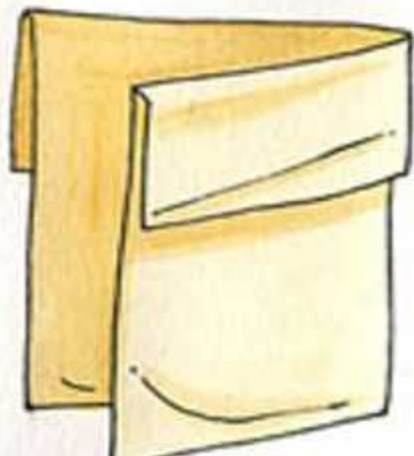
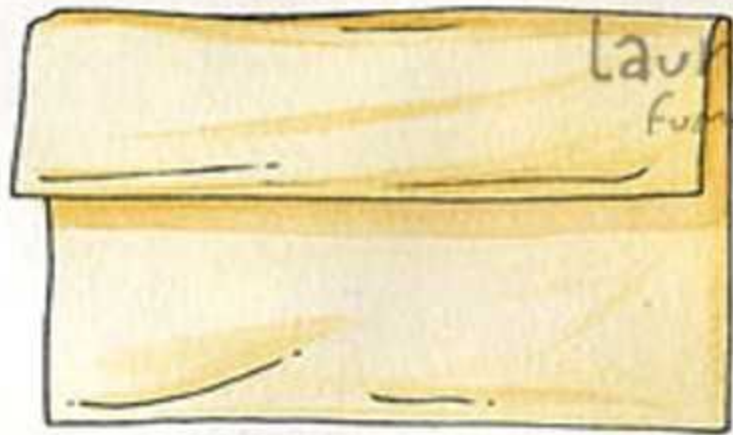


Fig. 75. — POSE DU PÉPLOS-OUVERT AVEC REPLI  
Sur le modèle vivant.

Laura Spianelli  
furetti e illustrazioni



# El jitón

